

TYPE	YEAR	PROJECT NO.	SHEET NO.
CONST.	2007	CM-098-3(14)	160
As built	2010		



N 36.06961  
W 086.47042

N 36.06955  
W 086.46841

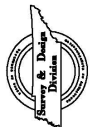
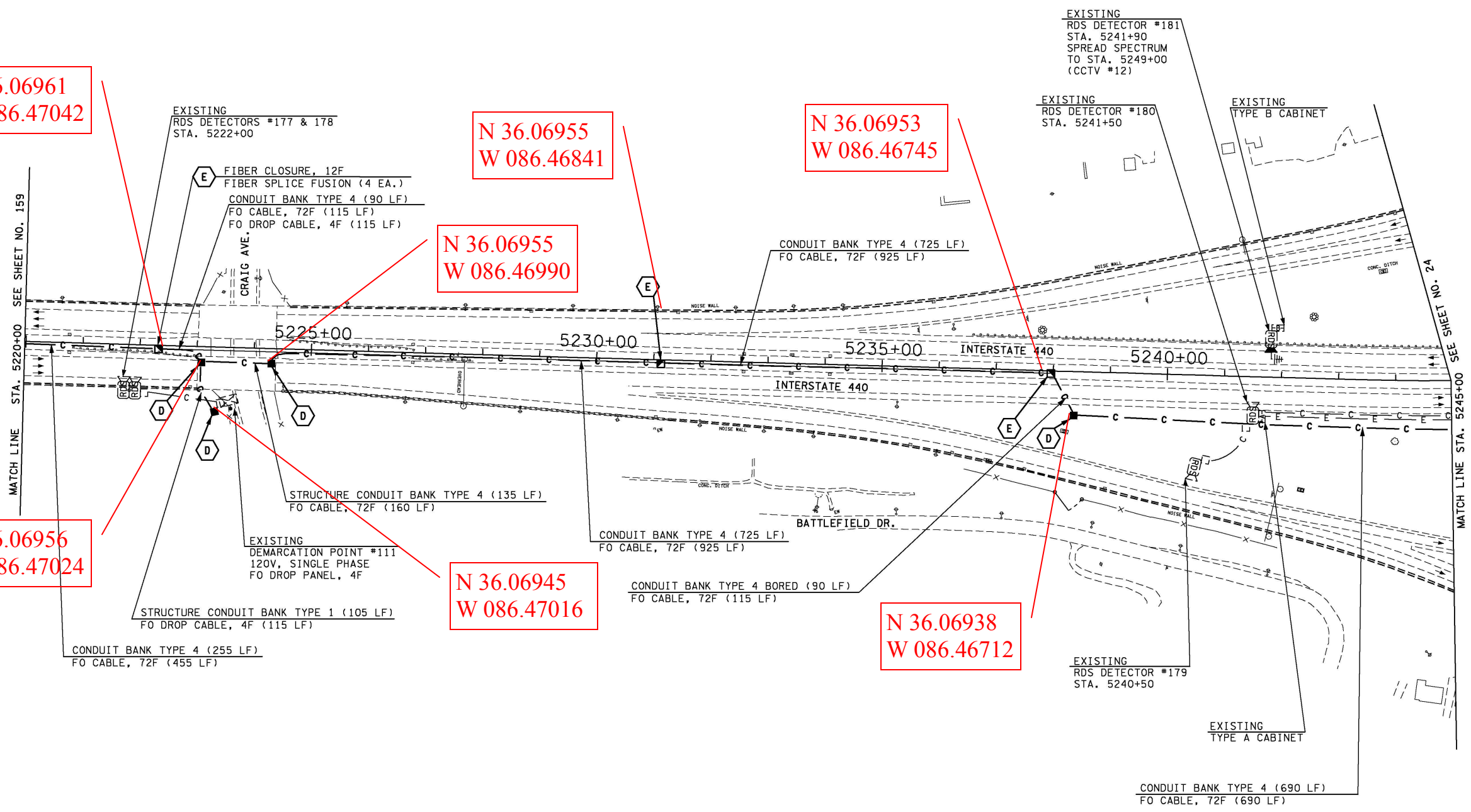
N 36.06953  
W 086.46745

N 36.06955  
W 086.46990

N 36.06956  
W 086.47024

N 36.06945  
W 086.47016

N 36.06938  
W 086.46712



STATE OF TENNESSEE  
DEPARTMENT OF TRANSPORTATION

ITS LAYOUT  
I-440  
STA. 5220+00 TO  
STA. 5245+00  
SCALE: 1"=100'